

# Coastline

Texas Gulf Coast Chapter • 1400 Velasco Boulevard • Freeport, TX 77541 • (979) 233-1616 • Fax (979) 239-4386

## Free Enterprise Alliance Urges Washington to “Halt the Assault” on Small Business

Public opinion polls consistently show that small businesses and entrepreneurs maintain the highest approval rating of any job creating sector in the nation. Yet, burdensome regulations, bureaucratic red tape and a complicated tax structure are stifling those same small businesses and entrepreneurs.

ABC’s Free Enterprise Alliance has launched a campaign to educate the American people and our elected officials about the issues that affect small businesses every day.



### A few solutions:

- Repeal the “Patient Protection and Affordable Care Act” for greater choice and affordability
- Reduce complexity of the tax code — repeal the estate tax — extend the 2001/03 tax cuts to everyone.
- Ensure access to capital for small businesses — Main Street doesn’t need a Wall Street bailout, but they do need fewer restrictions.
- Remove the bureaucratic “red tape” inhibiting small businesses from creating growth and prosperity.

### Legislative Action Needed!

To join the campaign, please visit [www.halttheassault.com](http://www.halttheassault.com) for more information and ways that you can help get the message to our congressmen!

### ABC Membership Doesn’t Cost, It Pays!

To see how your congressman is voting or to find information about candidates and other important mid-term election information, visit ABC’s newly launched website: [ABCVotes.com](http://ABCVotes.com)

(see next page for more information)



**Builders and Contractors:  
Get into politics, or get out of  
business!**

## ABC National Rolls Out ABCVotes.com

Associated Builders and Contractors recently announced the official launch of **ABCVotes.com** (formerly MeritShopVotes.com) as an online resource for members during the 2010 elections.

The website is designed to assist ABC members and their employees to get out and vote in this year's mid-term elections. The site contains, among other things, candidate information (with links to campaign websites), political do's and don'ts, ABC issue briefs, Congressional scorecards, important election dates, deadlines and links.

**In the Do's and Don'ts Section of the website, find answers to questions like:**

- What Type Of Signs May ABC And Its Member Companies Put Up?
- What Rules Apply To Voter Registration And Get-Out-The-Vote Drives?
- May An ABC Chapter Company Distribute Voter Guides?
- May An ABC Chapter Send An Advocacy Letter Or Other Printed Materials Supporting A Federal Candidate To ABC Members?
- What Is Issue Advocacy?
- What Means Can I Use to Advocate Issues?

The site will also highlight the Top 50 House races around the country. (Texas makes the list.)

### Texas

**TX-17:** [Bill Flores](#) (R) vs. [Chet Edwards](#) (D)

**TX-23:** [Quico Canseco](#) (R) vs. [Ciro Rodriguez](#) (D)

ABC Texas Gulf Coast members are encouraged to 'bookmark' this site to use as a resource during the very important upcoming mid-term elections and remember, as an ABC member, you need to "Get into politics, or get out of business!"

# Membership



## ABC, CSC & MSTI Joint Membership Event & Luncheon



**Guest Speaker:**  
**Jim Bob Solsbery,**  
a 'humorist with a  
message'  
**Laugh Your Way Out!**

Houston based keynote speaker, Jim Bob Solsbery, has a unique mix of down-home humor and valuable insights which appeals to people from small towns,

corporate boardrooms and everywhere in between.

"Laugh Your Way Out's" secret weapon is HUMOR! Studies show that humor and laughter can reduce your blood pressure, relieve stress, and improve brain function.

**Join us Sept. 22 for the fun and free blood pressure medicine!**

**Make plans to attend . . .**

**Wednesday,  
September 22, 2010**  
**11:00 a.m. Registration & Social**  
**11:30 a.m. Event/Luncheon**  
**1:00 p.m. Adjourn**

**NEW!**

**Registration:**  
**Watch for new pdf. form that can  
be returned by fax, mail or email**

or call the ABC office at 979.233.0279 or 233.1616

Make reservations before noon on Friday,  
September 17th.

**Don't Forget:**  
**Now is the time to reserve your space  
for a tabletop display.**

**Membership with ABC Texas Gulf Coast is good  
business! Advertise your company here!**



Construction • Contract Maintenance • Project Controls • Pipe, Vessel & Modular Fabrication  
Equipment & Rigging • Environmental Remediation • Turnarounds & Shutdowns  
Specialty Welding • Scaffolding • NDT • Boiler Related Services • Bundle Extraction & Cleaning  
Hydroblasting & Chemical Cleaning • Painting

3850 Pasadena Blvd., Pasadena, TX 77503 • 713-477-7440

[www.turner-industries.com](http://www.turner-industries.com)



Angleton, Texas Office:  
2309 West Mulberry  
Angleton, Texas 77515  
T: (713) 427-5400  
F: (713) 427-5500  
[www.beis.com](http://www.beis.com)

### Industries Served:

- Refining
- Chemical
- Power
- LNG
- Pulp & Paper
- Cement
- Manufacturing
- Marine Fabrication
- Off-Shore
- Ship Yard
- Infrastructure
- Commercial

### Services Provided:

- Scaffolding
- Insulation
- Surface Preparation
- Industrial Coatings
- Refractory
- Fireproofing
- CUI Management
- Abatement

Save the date!

ABC Golf Classic

Monday,

October 4, 2010

at

Wilderness Golf  
Course

12:30 p.m. tee time

## 26th Annual ABC Golf Classic



Texas Gulf Coast  
Chapter

An enjoyable outing for you, your clients or your employees!

Prizes will be awarded for

1st through 5th place in each flight.

Snacks, beverages, dinner buffet and more . . .

### A SLICE at Life!!!

Joe, a notoriously bad golfer, hits his ball off the first tee and watches as it slices to the right and disappears through an open window. Figuring that's the end of it, he gets another ball out of his bag and plays on. On the eighth hole, a police officer walks up to Joe on the course and says, "Did you hit a golf ball through a window back there?" Joe says, "Yes I did."

"Well," says the police officer, "it knocked a lamp over, scaring the dog, which raced out of the house onto the highway. A driver rammed into a brick wall to avoid the dog, sending 3 people to the hospital. And it's all because you sliced the ball."

"Oh my goodness," says Joe, "is there anything I can do?" "Yes there is," the cop says... "Try keeping your head down and close up your stance a bit!"

Author — Anonymous from Ajokes

Plan to play with  
ABC!

Watch for details and entry  
forms coming to you soon.

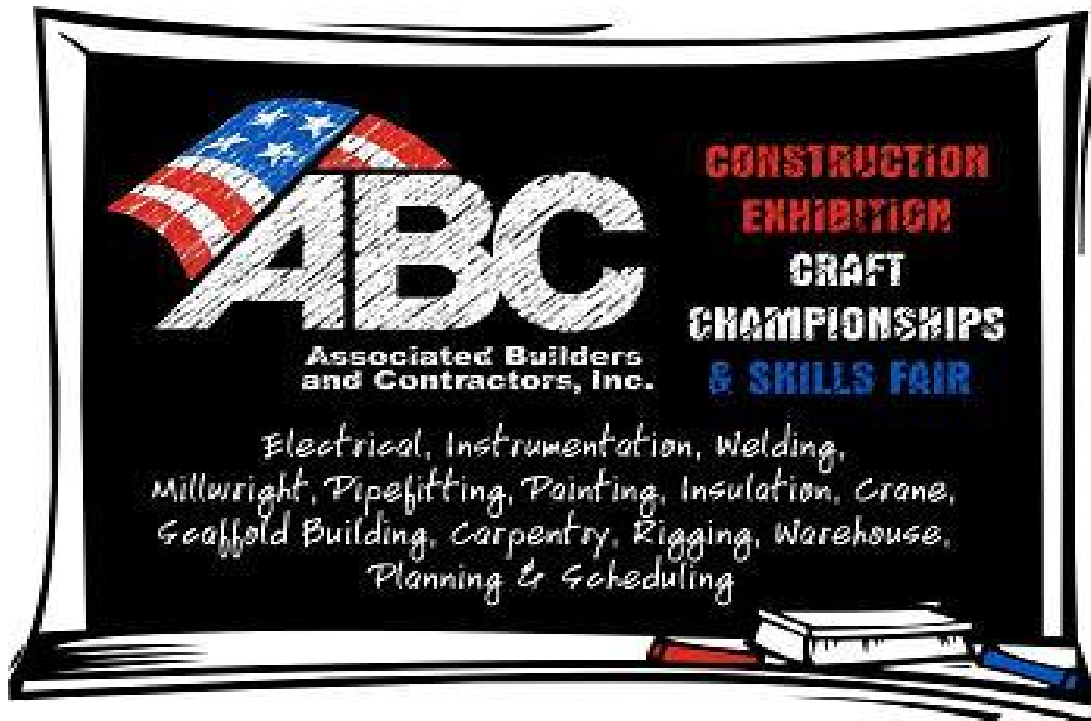


The ABC Construction Exhibition and Craft Championships  
are only 2 months away!

Have you sent in your sponsorship form yet?

Be a part of helping attract young talent to our industry!

Thursday, October 28, 2010  
Brazosport College in Lake Jackson, TX  
Construction Trades Area



ABC appreciates the early commitment of the following companies for their support of the ABC Construction Exhibition and Craft Championships:

**BASF**

**CMI**

**D-Electric Co.**

**DOW Engineering Solutions**

**DOW USA, Texas Operations**

**The Infinity Group**

**Miken Specialties Ltd.**

**Perstorp Coatings, Inc.**

**Shintech inc.**

**Testronics**

**TIC Energy & Chemical, Inc.**

**Tri-Construction Company, Inc.**



G. Mark Jodon, a shareholder in Littler Mendelson's Houston Office, serves as the labor and employment attorney for the ABC Gulf Coast Chapter. If you have any questions for Mark regarding the Davis-Bacon Act, he can be reached at (713) 652-4739 and [mjodon@littler.com](mailto:mjodon@littler.com).

© Gittings, 2010

## DAVIS-BACON ACT COMPLIANCE TIPS FOR SUBCONTRACTORS:

### PREVAILING WAGES & OVERTIME PAY OBLIGATIONS

#### *Prevailing Wages:*

#### *The "Minimum Wage" for DBA Projects*

The prevailing wages to be paid on a Davis-Bacon Act ("DBA") project are specified in the wage determination which is incorporated in the bid solicitation and the contract documents. The wage determination is also available on line at [www.wdol.gov](http://www.wdol.gov). This website provides a single location to obtain wage determinations for specific DBA contracts.

#### *3 methods to pay the minimum prevailing wage.*

Prevailing wage rates typically have a basic hourly wage rate and a fringe benefit component. For example, a wage determination may require that craftsmen in a specific classification get paid a basic hourly rate of \$15.00 and \$2.00 for fringe benefits. The contractor can satisfy the prevailing wage obligation by paying (a) \$17.00 in cash wages; (2) \$15.00 cash and \$2.00 in pension contributions or other "bona fide" fringe benefits (i.e. life and health insurance, vacation, holidays, sick leave); or (3) any other combination that totals \$17.00 provided the cash wages component is not less than the lowest basic hourly rate specified in the wage determination.

### Overtime Pay Principles

*The fundamental overtime pay principle.* The important principle to remember for overtime purposes is that a craftsman who works more than 40 hours in a given workweek is entitled to overtime on each hour in excess of 40 for that workweek. The basic hourly rate specified in the wage determination is the straight time hourly rate to be used for calculating overtime and it cannot be less than the basic hourly rate required in the applicable wage determination.

*Calculating overtime pay.* The following examples reflect the correct overtime calculations under the DBA for an employee who worked 44 hours, where the wage determination rate was \$15 (basic hourly rate) plus \$2.00 in fringe benefits.

If the employer paid \$15.00 in cash wages and \$2.00 in fringe benefits, the employee would receive:

44 hours x \$15.00 = \$660.00 for cash wages  
44 hours x \$2.00 = \$88.00 for fringe benefits  
4 hours x \$7.50 = \$30.00 for "half-time" overtime premium  
Total wages earned = \$778.00

If the employer paid \$13.00 in cash wages and \$4.00 in fringe benefits, the employee would receive:

44 hours x \$13.00 = \$572.00 for cash wages  
44 hours x \$4.00 = \$176.00 for fringe benefits  
4 hours x \$7.50 = \$30.00 for "half-time" overtime premium  
Total wages earned = \$778.00

If the employer paid \$16.00 in cash wages and \$1.00 in fringe benefits, the employee would receive:

44 hours x \$16.00 = \$704.00 for cash wages  
44 hours x \$1.00 = \$44.00 for fringe benefits  
4 hours x \$7.50 = \$30.00 for "half-time" overtime premium  
Total wages earned = \$778.00

In today's economy, there may be times where the basic hourly wage paid the craftsman is higher than the basic hourly rate specified in the wage determination in order to attract the labor needed for the project. In that situation, the higher basic hourly wage actually paid the craftsman must be used to calculate the overtime pay instead of the lower basic hourly wage specified in the wage determination.

Additionally, please note that in each of the above examples, the fringe benefits rate is paid at the straight rate for each hour actually worked. There is no overtime premium due on the fringe benefits component.

Continued next page

**Overtime pay calculation for work involving multiple pay rates.** The overtime pay calculation is a little more difficult when the employee works in different job classifications at different rates of pay in the same workweek. This situation may arise on a DBA worksite where the employee works part of the workweek as a painter and part of the workweek as an electrician. Assuming that the wage determination provides that the painter is to receive \$10.00 as a basic hourly rate plus \$3.00 in fringe benefits, and the electrician is to receive \$12.00 as the basic hourly rate plus \$4.00 in fringe benefits. In this example, the employee works 30 hours as a painter and 18 hours as an electrician. The first step is to determine the straight time wages that are due the employee, excluding fringe benefits. In this example, the 30 hours as a painter total \$300.00 and the 18 hours as an electrician total \$216.00, for a total straight time wages of \$516.00. In order to calculate the “regular rate,” the total straight time amount is divided by the total hours worked, or in this case \$516.00 divided by 48. Based on this calculation, the employee’s “regular rate” was \$10.75 per hour. Because the employee worked 48 hours in the workweek, the employee is entitled to 8 hours of overtime. Under this method, the employee is entitled to \$43.00 in overtime (\$10.75 divided by 2 times 8 overtime hours worked).

**The “rate in effect” overtime pay calculation.** A slightly different calculation occurs where the overtime premium is based on the “rate in effect” when the overtime hours are worked. The DBA contract document would specify if the “rate in effect” method should be used to calculate overtime pay. In this example, the employee worked the first 30 hours in the workweek as a painter and then worked the remaining 18 hours as an electrician; therefore the 8 hours of overtime were earned while the employee worked as an electrician. Consequently, the overtime premium would be \$48.00 instead of \$43.00 under the “rate in effect” method. The \$48.00 overtime premium is calculated by taking the basic hourly rate for the electrician classification (i.e., \$12.00 per hour) dividing it by 2 (to account for the half time premium that is owed

since the employee received straight time pay) multiplied by the total number of overtime hours (8). It should be noted that in some cases, a question may arise over whether a cash payment made to the employee is paid in lieu of a fringe benefit contribution or whether it is simply part of the employee’s normal straight time wages. In the latter situation, the cash payment is not excludable in computing the overtime pay obligation.

**Workweeks split between DBA & Non-DBA jobs.** There may also be workweeks where the employee splits time between DBA projects and non-DBA projects. Unless specifically exempted from the Fair Labor Standards Act (“FLSA”) overtime payment requirements, an employee who performs work on both DBA and non-DBA projects in the same workweek must receive an overtime premium for hours worked in excess of 40 in the workweek.

**Workweeks split between exempt and non-exempt work.** There may be times when an exempt employee has to go on his tools and perform non-exempt work. In this case, the employee is entitled to overtime pay for each hour worked in excess of 40 for that workweek. The exemption is not lost or forfeited, however, by the fact that the employee performed some non-exempt work on the DBA project.

**Additional compliance tips.** An employee who works for the same subcontractor on two separate DBA jobs is entitled to have the hours worked on both jobs counted together for purposes of overtime pay. For example, if the employee works 30 hours on one DBA job and then is transferred to another DBA job and works 15 hours during that same workweek, the employee worked 45 hours total and therefore is entitled to 5 hours of overtime pay. If an employee works in excess of 40 hours for more than one subcontractor on a DBA job during a workweek, the employee is entitled to overtime.

**Compliance with state and local laws.** Federal laws regarding minimum wages and overtime pay do not preempt the requirements of similar state and local laws. These laws set minimum requirements and can apply concurrently. Therefore, compliance with each applicable wage and hour law is required to ensure full compliance with the overtime pay obligations.

Questions: Call Mark Jodon, Littler Mendelson at 713.652.4739

## HR Professionals, mark your calendars!

ABC Human Resources Q & A Session, including an “Employment Law Update” presented by Mark Jodon on Thursday, September 16 at ABC Facilities.

**This session is for ABC members only and is free of charge.**

*See next page for further details*



Texas Gulf Coast  
Chapter

**Benefits in action!**

Thursday,

September 16, 2010

3:00 p.m. to 4:00 p.m.

ABC

Texas Gulf Coast Chapter

1400 Velasco Blvd.

Room 104A

Freeport, Texas

ABC HUMAN RESOURCES COMMITTEE  
Presents . . .

## Question & Answer Session

Given by  
MARK JODON

You are invited to attend and participate in this “members only” session at no charge!

Mark Jodon of Littler Mendelson, the nation’s largest employment labor law firm, will be available to answer questions relevant to Human Resources practices. An Employment Law Update will be included in this session.

HUMAN RESOURCES PERSONNEL . . .

Make a list of those “questions” or email your questions prior to September 16th to: [ruby@abctxgulfcoast.org](mailto:ruby@abctxgulfcoast.org)

**Please note: this is the last scheduled session for 2010. Don't miss this opportunity.**

***Make your reservations today!***

To allow for proper accommodations, please register at:

[www.abctxgulfcoast.org](http://www.abctxgulfcoast.org) or call the ABC office at:

979.233.0279 or 233.1616



Total Concept Contractor  
With Nationally Recognized  
Safety Program

800-231-9849  
979-233-5555



Tri-Construction Company, Inc.



5550 Highway 332 East  
P.O. Box 3100  
Freeport, Texas 77542  
979-233-7211  
Fax: 979-233-5261  
[www.tri-con.com](http://www.tri-con.com)



122 West Way, Suite 405  
Lake Jackson, Texas 77566

The nationwide leader in supplying lifting and rigging products and services for sale or rent. With multiple branches along the Gulf Coast, you can count on our quality and service to meet your demands.

Phone: (979)285-6100

Fax: (979)299-3042

[www.deltarigging.com](http://www.deltarigging.com)

# Training



## Wharton County Junior College



Texas Gulf Coast Member and MSTI Sponsored NCCER Training Group to hold Welding Contest for area High Schools and Community College Welding students this fall.

**What:** Wharton County Jr. College Welding Contest

**When:** October 15, 2010 at 8:30 a.m.

**Where:** Wharton County Jr. College Central – Campus, 911 Boling Highway, Wharton, Texas 77488, Carl N. Reynolds Building

**Who:** High school and college students enrolled in welding classes or AG classes, students will be able to compete in AG welding contest (only for AG Students) and/or Non-AG welding contest. Each instructor can bring (3) teams with (5) students in each team. High school students will compete against other high school students, and college students will compete against other college students. Each level is for high school and college students.



Students need to bring lunch or money for lunch. Cost is \$20.00 per student.

Students are responsible for all welding safety equipment & tools (i.e. welding hood, leather boots, safety glasses, long sleeve shirt, chipping hammer, welding hood, etc.)

Deadline for registration is September 15, 2010. Contact Roy Jones for registration form: [joner@wcjc.edu](mailto:joner@wcjc.edu)

Payment (Check or money order payable to WCJC welding Department) due by September 30. Send payments to Wharton County Jr. College, 911 Boling Highway, Wharton, Texas 77488; Attention: Roy Jones, Albert Urbina.

**Project:** Students can bring AG projects or welding projects. Cost is \$20.00 per project. The categories for the projects are AG Mechanic, Trailers, BBQ pits, and furniture. Please indicate on your registration which category projects are in.

# Membership



Texas Gulf Coast Chapter (proud ABC Chapter since January 1, 1976) welcomes new member, KOCH Specialty Plant Services, Inc. out of the Houston area. KOCH, sponsored by ABC Board Chair Lisa Bundick Woods, Tri-Con Inc., joined our membership in June 2010.

Koch Specialty Plant Services, Inc. is a world leader for providing tower vessel and mass transfer equipment services. Koch Specialty Plant Service (KSPS) was formed in 1997 by joining the two premier providers of tower specialty services in the world - Koch Engineering Field Service and Glitsch Field Services.

KOCH representatives will be recognized at the September Membership Event and Luncheon at RiverPlace in Freeport. Please plan to attend to help us welcome new members to our dedicated organization.

*Welcome!  
New Member*



## ABC/MSTI Craft Training Program



Associated Builders and Contractors of Texas Gulf Coast, Inc. and Merit Shop Training, Inc. Craft Training Program offers training through Brazosport College in each of the following crafts:

**Automotive Mechanic**

**Carpentry**

**Electrical**

**Engineering Graphics & Design**

**HVAC**

**Instrumentation**

**Machine Tools**

**Millwright**

**Pipefitting**

**Safety, Health & Environmental Management**

**Welding**

### REGISTRATION SCHEDULE for ABC Students

**Date:** August 24, 2010 ( Tuesday)

**Time:** 5:00 p.m. until 6:30 p.m.

**Place:** Front entrance Brazosport College—Go to Assessment Station, F-133 & F-135

**Cost:** \$60 per credit hour ( 3 hour class-\$180; 4 hour class-\$240 )

*For new students or those who have not been to the college within the last year:*

Must fill out an on-line application for admission to Brazosport College before registering for classes.

To complete application go to [www.applytexas.org](http://www.applytexas.org)

**“Returning students must phone or internet register.”**

**July 26—August 20, 2010**

**Classes begin Monday, August 30, 2010**



If you have questions or if your company is interested in phone or internet registration for employees, please call Jane at the ABC office, 979.239-4372 or 979.233.1616.

## WANTED!

### ABC Supplier Member Exhibits for October Mixer

The **ABC Suppliers' Council Committee** is now recruiting vendor displays. If you would like the opportunity for **great networking and exposure for your business**, then plan to enter your supplier exhibit today!

The Mixers showcase various ABC Supplier Member exhibits through a relaxed and enjoyable social, including hors d'oeuvres, refreshments and door prizes. This upcoming event is scheduled for:

**THURSDAY, OCTOBER 21, 2010**

Take advantage of this opportunity to display your company's products and services!



For more information, contact Ruby at the ABC office:

[ruby@abctxgulfcoast.org](mailto:ruby@abctxgulfcoast.org)  
979.233.0279, 979.233.1616

or

You may also contact any of the members serving on the Suppliers' Council Committee.  
See listing below.



Texas Gulf Coast Chapter

Reserve your space today!

#### Suppliers' Council Committee Members

**MICKEY LESTER**-Suppliers' Council Committee Chair  
Wholesale Electric Supply Co. 979.265.3000  
[mickeyl1@wholesaleelectirc.com](mailto:mickeyl1@wholesaleelectirc.com)

**MICHELLE MINCHEW**, EPSCO International  
979.233.2555 [michellem@epscointl.com](mailto:michellem@epscointl.com)

**JAY MEJIA**, Mejia Industrial Supply Co.  
979.233.2362 [jay@mejiasupply.com](mailto:jay@mejiasupply.com)

**JERRY WAGNER**, United Rentals Trench Safety  
713.944.9661 [wagnerm@ur.com](mailto:wagnerm@ur.com)

# Community Involvement



A proud committee of ABC Texas Gulf Coast

Coming Soon!  
Food Drive  
and Toy Drive for  
Children's  
Christmas Gifts

*Together we can make a difference!*

Have an extra 5 in your pocket?

Bring us 5 lbs. of food or \$5 for the food drive when you drop off your toy donations!

*The ABC Cares Food Drive is a year-long activity and donations are always accepted. The ABC Public Relations Committee delivers food and cash to the local food pantry throughout the year.*

## ExperTox®

drugs.alcohol.poisons.laboratory

One Source...  
Numerous Options...  
Differences That Matter.

**You need to get candidates on the job fast. That's why using a local laboratory, not just a collection site, for your occupational health testing services is critical.**

ExperTox is your single source solution for:

- Drug and Alcohol Tests
- Breath Alcohol Tests
- Occupational and Toxic Exposure Tests
- Pulmonary Function Tests (PFTs)
- Respirator Fit Tests
- Baseline Evaluations
- DOT and Non-DOT Physicals
- Audiograms
- Vision Screens
- 24/7/365 Emergency Onsite Services
- Vaccinations and Flu Shots
- Phlebotomy Services
- DISA, ASAP & other specimen collections
- And More...

**Three Locations to Serve You:**

ExperTox  
1803 Center Street  
Deer Park, TX 77536  
281-476-4600

All American Screening  
Co-located Contractors'  
Safety Council  
9098 County Rd. 360  
Sweeny, TX 77480  
979-548-4190

All American Screening  
Brazosport Contractors'  
Safety Council  
1400 Velasco Blvd.  
Bldg. C-101  
Freeport, TX 77541  
979-239-3000

www.experfox.com

## ABC Contractors for Kids & Community

Another proud committee of ABC Texas Gulf Coast working for our members and our community

### 3 Distribution Categories

Construction Employee Assistance

Children & Education

Community Charitable Organizations



One of your own employees may need help!

Please call the ABC office at 979.233.1616 for details.

## INNOVATIVE, AFFORDABLE HEALTH INSURANCE

AS EASY AS A...B...C!



ASA MEMBER OF ABC, you have access to an exclusive health insurance program with medical and prescription drug coverage in one convenient plan – that fits your budget.



### Exclusive Program Advantages

- Smart, Flexible plan choices
- Cost-savings, Consumer-directed options
- Pharmacy benefits through WellPoint
- Exclusive benefits through your association



Products are underwritten and administered by Trustmark Life Insurance Company or Trustmark Insurance Company.

400 Field Drive • Lake Forest, IL 60045

### SOLID EXPERIENCE THROUGH TRUSTMARK

Trustmark has nearly 100 years experience in the insurance industry and more than 50 years as a leader serving associations and other affiliated organizations.

Contact ABC Merit Choice today to learn how you can take advantage of this exclusive plan.

p: 800.621.2993, ext. 2050  
e: MeritChoice@abc.org

N353-273 (12-08)

# Training



## Project Management

Level 2 CMA  
Fall 2010 Semester

This course provides participants with the necessary problem-solving skills to address crucial issues confronted on a construction project. The class will be led by an NCCER Certified Instructor who is currently working as an upper-level manager and can bring relevant knowledge, experience and examples for illustration and discussion.

**Course Topics:** Interpersonal Skills, Issues and Resolutions, Safety, Continuous Improvement, Resource/Quality Control, Estimating/Cost Control, Scheduling, Construction Documents, Construction Planning

### Who Should Attend?

Project managers, estimators, schedulers, project engineers, project supervisors, and assistant project managers

**Pre-requisite:** Successful completion of Project Supervision (Level 1 CMA) or 85 or better on NCCER Foreman Assessment.

**Length of course:** 18 weeks (Tuesday nights, 6-9 pm); **next class begins August 17, 2010**

**Cost:** \$450-ABC Member; \$800-non ABC Member (includes textbook & cost of NCCER Written Assessment)

**Successful Completion of Course for Graduation Requires:** NCCER written assessment for Supervisor & Foreman

## Two New Electrical Continuing Ed. Classes Scheduled for August 2010

Course # 5461 Provider #1036

**Did you know...** starting September 1, 2010, Electrical apprentices will now also be required to get 4-hours of continuing education to renew their licenses with Texas Department of Licensing and Renewal (TDLR)?



Merit Shop Training, Inc., educational affiliate of ABC, offers instructor-led classes to satisfy this requirement. Our Master Electrician will provide instruction that meets the TDLR requirements to review NEC standards and changes and updates in law.

**Dates:** Thursday, 8/19 (4:30-8:30 p.m.) or Saturday, 8/28 (8:00-noon).

### For information or registration:

Call the ABC Offices at 979.233.1616 or email [becky@abctxgulfcoast.org](mailto:becky@abctxgulfcoast.org)

ABC Members: \$40 non-ABC Members: \$50

All materials provided. Share a relaxed classroom setting with and discussion other electricians. Coffee and doughnuts also provided.



National Bank  
of Lake Jackson

Established in 1963

"Person To Person"  
Banking in Two Convenient Locations

Brazoria

Lake Jackson

100 E. San Bernard  
979/798-0800

122 West Way  
979/297-4012



www.fnbj.com

## Your Winning Formula

The Perstorp Group, a trusted world leader in specialty chemicals, places focused innovation at your fingertips. Our culture of performance builds on over 125 years of experience and represents a complete chain of solutions in organic chemistry, process technology and application development.

Discover your winning formula at  
[www.perstorp.com](http://www.perstorp.com)

6213 East Hwy 332  
Freeport, TX 77541  
Phone: 979-233-7871  
Fax: 979-233-8748



## TESTRONICS

Field Service Maintenance and Acceptance Testing of electrical power and power generating systems including calibration and repair of transformers, switchgear, protective relays and circuit breakers.

PO Box 856  
919 S. Shanks  
Clute, TX 77531

24 Hour 979-233-8560  
Fax: 979-265-6610



Rental ♦ Service ♦ Sales

Arizona ♦ California  
Florida ♦ Iowa  
Georgia ♦ Kansas  
Louisiana ♦ Utah  
Missouri ♦ Nebraska  
Nevada ♦ Oregon  
Texas ♦ Washington

- ♦ Hydraulic Trench Shoring
- ♦ Trench Shields (Boxes)
- ♦ Trench Safety Engineering
- ♦ Steel Crossing Plates
- ♦ Air & Hydro Test Eqpt.
- ♦ Confined Space Eqpt.
- ♦ Construction Lasers
- ♦ Piercing & Boring Eqpt.
- ♦ Saws & Blades

Houston (713) 944-9661  
USA Toll Free: 1-800-URRents  
1-800-877-3687



# Your Business Can Save Money

## Get Exclusive Discounts with ABC's National Business Partners

(Updated December 2009)

Visit online to find out how your company can start saving today. To learn more about these and any new ABC member discount programs, visit [www.abc.org/discounts](http://www.abc.org/discounts).

### NEW! Mobile Phones and Wireless Technology

#### Verizon Wireless

ABC contractor members are eligible to receive discounts on monthly calling plan fees. Plus, employees of participating companies are eligible for calling plan discounts on their personal lines. These exclusive savings apply to both existing and new lines of service. Visit [www.abc.org/verizon](http://www.abc.org/verizon).



### Next Day and Ground Delivery

#### FedEx

Save up to 29 percent on select shipping services including next day delivery. Call (800) 636-2377 or visit [www.abc.org/fedex](http://www.abc.org/fedex).



### Vehicle Fleet Management

#### Enterprise Fleet Management

Reduce your vehicle fleet management costs and gain access to ABC's manufacturer incentives. Call (877) 233-5338 or visit [www.abc.org/enterprise](http://www.abc.org/enterprise).



### Company Vehicles

#### General Motors

ABC members with one or more vehicles can combine ABC's discounts on trucks, vans and cars with most any other GM fleet or retail incentive currently available. Call (800) 353-3867 to learn more or visit [www.abc.org/gm](http://www.abc.org/gm).



### Fleet Vehicles

#### Ford

ABC members that qualify with Ford as a fleet customer are eligible for enhanced fleet discounts on 2009 and 2010 model year vehicles. Call (877) 530-9953 for specific program information or visit [www.abc.org/ford](http://www.abc.org/ford).



### Work/Safety Apparel and Uniforms

#### ARAMARK

Save 20 percent on uniform rentals and receive special discounts on work and safety apparel purchases. Call (818) 973-3906 and mention that your company is a member of ABC or visit [www.abc.org/aramark](http://www.abc.org/aramark).



### Payroll Services

#### Paychex

Receive a 15 percent annual discount on payroll processing services. Discounts are offered to both new and existing Paychex clients. Call (800) 729-2439 and mention code "5802" or visit [www.abc.org/paychex](http://www.abc.org/paychex).



### NEW! Bona Fide Benefit Plans

#### The Contractors Plan

Set up fees are waived on The Contractors Plan, a bona fide benefit plan developed by Fringe Benefit Group to help merit shop contractors bid more competitively and meet the compliance and reporting requirements of government-funded work. Visit [www.abc.org/fringe](http://www.abc.org/fringe).



### Construction Accounting

#### Foundation Software

Receive a free executive management module with any construction accounting package – a \$700 value. Call (800) 246-0800 or visit [www.abc.org/foundation](http://www.abc.org/foundation).



### Office Supplies, Furniture and Computers

#### Office Depot

Save an average of 7 percent on already aggressive Web-based pricing for traditional office supplies. Special savings also available on office furniture and equipment, computers, and printing. Call (800) 890-4914 ext. 3050 or visit [www.abc.org/officedepot](http://www.abc.org/officedepot).



### Fuel Purchases

#### Shell

Save 3 percent on all company fuel purchases at thousands of Shell locations nationwide. There's no monthly fee and the minimum purchase requirements have been waived. To apply, visit [www.abc.org/shell](http://www.abc.org/shell).



### Contract Documents

#### ConsensusDOCS

Save up to 20 percent on more than 70 different construction agreements by using partner code "ABC" and promotion code "100." For more information and to order, visit [www.abc.org/docs](http://www.abc.org/docs).



# Membership

## ABC Board of Officers and Directors

### Officers

**Lisa Bundick Woods**

*Chairperson*

**Buck Blevins**

*1st Vice Chairperson*

**Gerald Andrews**

*2nd Vice Chairperson*

**John Woods**

*Treasurer*

**Mark Monical**

*Secretary*

**Daryl Dauer**

*Assistant Secretary*

### Directors

Alan Archer

Steve Bundick

Clinton Farmer

Amando Gonzalez

Jim Heath

Mickey Lester

Mike Mathis

Jay Mejia

James Reynolds

Mike Scarborough

Richard Stoffel

### ABC Advisors

Larry Labay

Lori Goucher

### ABC Staff

**Terry McAlister**

*President & CEO*

**Becky Rinehart**

*Director of Education*

**Ruby Pratt**

*ABC Administrative Assistant*

**Jane Brown**

*Craft Training Coordinator*

**Gloria Lara**

*MSTI Administrative Assistant*

**Debora Riley**

*Accounting Manager*

## Events and Meetings for August 2010

- Aug 5 Suppliers Council Committee Meeting 3:00 p.m. 104B
- Aug 10 ABC Board Meeting 3:00 p.m. 104B
- Aug 12 Human Resources Committee Meeting 3:00 p.m. 104A
- Aug 17 Project Management Classes begin 6:00 p.m. 104B
- Aug 19 Electrical Continuing Ed. Class 4:30 p.m. 104B
- Aug 24 Registration at Brazosport College 5:00 p.m.
- Aug 28 Electrical Continuing Ed. Class 8:00 a.m. 04B
- Aug 30 MSTI Craft Training classes at Brazosport College begin
- TBA Public Relations Committee Fund Presentations

**Put these future ABC Events  
on your calendar now!**

- Sept 16 Human Resources Q & A Session
- Sept 22 ABC Membership Event & Luncheon
- Oct 4 ABC Golf Classic
- Oct 21 Supplier Member Mixer
- Oct 28 ABC Construction Exhibition & Craft Championships



Looking for a good round of golf? We'll be looking for you and your friends come October!!!!

Put the Annual ABC Golf Classic on your calendar now—we will see you there!

Monday, October 5 at The Wilderness